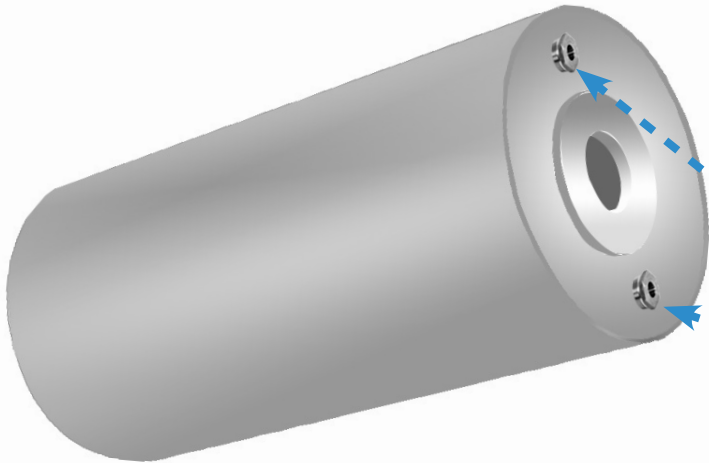
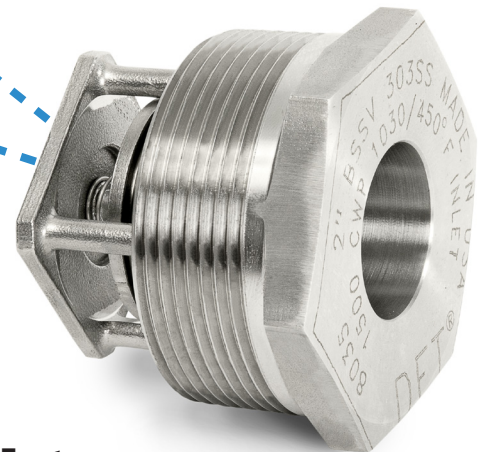


# For the Textile Industry

## Superior Protection for your Dry Cans



### DFT® Vacuum Breaker®



For superior protection against collapse of pressure vessels, dry can, or slasher collapse, DFT® Vacuum Breakers (model BSSV) are the valve of choice used extensively in the textile industry.

Steam heated drying cylinders are commonly used to dry ink on printed cloth. When the machinery shutdowns, the steam in the cylinders begins to condense into water and a vacuum is created in the cylinder. A vacuum breaker is used to prevent the cylinder from collapsing, damage, and downtime.

DFT Vacuum Breakers provide tight shutoff to prevent steam leakage during operation and reliably opens during the cooling cycle to prevent pressure collapse damage to the cylinder.

Available for size 1" through 4" pipe threading in can, cylinder, or vessel. Built for durability, DFT Vacuum Breakers are made of corrosion resistant stainless steel. The valve has a lapped disc and seat for tight shutoff.

For more information about DFT® Vacuum Breakers  
or other check valves for the textile industry  
contact us online at  
[www.dft-valves.com](http://www.dft-valves.com)  
or by phone **1-800-206-4013**

#### Features:

- 1" to 4" size (outside diameter)
- 450 to 6000 CWP
- Threaded O.D. (MNPT)
- Unthreaded inlet bore
- Stainless steel construction
- Horizontal or vertical installation
- Tight shutoff - lapped disc & seat
- Easy maintenance
- Versatile
- Options:
  - Inconel® X-750 spring
  - Soft seat (for bubble-tight shutoff)



Quality Manufacturer of Check Valves & Control Valves

[www.dft-valves.com](http://www.dft-valves.com)  
email: [dft@dft-valves.com](mailto:dft@dft-valves.com)  
Exton, PA USA

Tel: 610.363.8903  
Fax: 610.524.9242  
Toll Free: 1.800.206.4013